

# In the tones



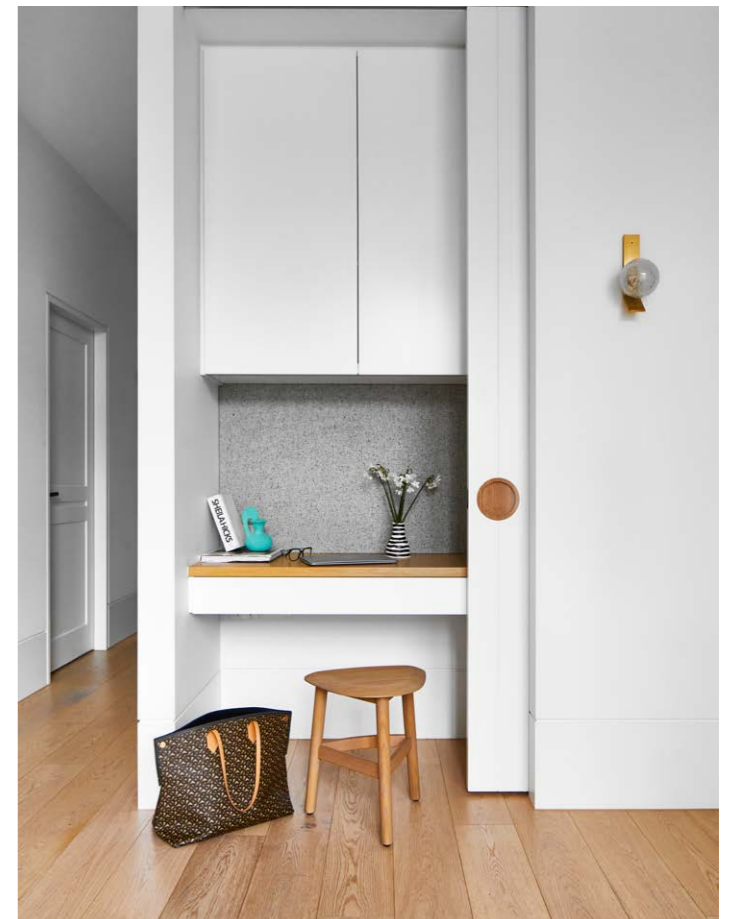
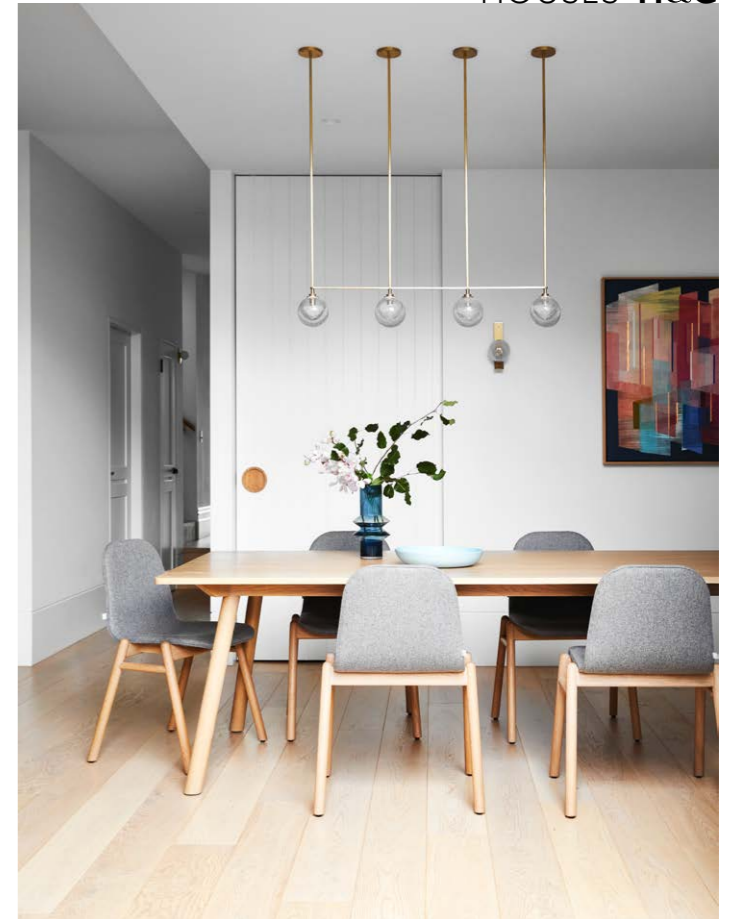
Triumphant use of colour propelled this Melbourne home out of its time warp, setting it up for a bright and beautiful future.

STORY Jackie Brygel | STYLING Julia Green | PHOTOGRAPHY Armelle Habib



**LIVING** Homeowners Alison and Nick with their children (from left) Jack, Lucy and Sophie, and the family's cavoodle, Frankie. Steel-framed windows and doors by Creative Windows (throughout). Ash side table, Hudson modular sofa and Sweeney armchair, all Jardan. Germany Polaris rug, Halcyon Lake Rugs & Carpets. Polished-concrete bench seat. The flooring is American oak (throughout). **STREET ENTRANCE** Original brickwork and tiles. Fence and exterior trims painted Dulux Lexicon Half.

**KITCHEN/LIVING** Splashback in Inax 'Madoka' tiles, Artedomus. Super White dolomite benchtops, Apex Stone. Porta Contours cladding (on island), Porta Mouldings. White joinery finished in Dulux Lexicon Half; timber joinery in Even Romano veneer from Elton Group. Door hardware, all In-Teria. Pull-out pantry units, Häfele. Fisher & Paykel fridge and Miele cooktop, oven and dishwasher, all E&S. Schweigen concealed rangehood, The Good Guys. Brodware 'City Stik' tapware, Bentons. Gubi 'Ronde' pendant lights, Cult Design. Hendrix kitchen stools, sofa, side table and cushions, all Jordan. **DINING** Kiyo dining table and Navy dining chairs, Jordan. Fizi pendant light and wall light, Articolo Lighting. Artwork by Antoinette Ferweda. **STUDY NOOK** Pinboard in De Le Cuona 'Huckleberry Lake', available from Boyac. Hendrix low stool, Jordan. Joinery by Antic Cabinet Makers (throughout). ▶





None could accuse Melbourne couple Alison and Nick of acting on impulse: the pair had been seriously contemplating the renewal of their ageing Victorian terrace for more than a decade before they finally took the plunge. But the couple hold no regrets for taking the longer, more considered road to forever-home bliss. Quite the contrary.

“As it turned out, waiting to renovate was the best thing we did,” says Alison. “We always loved the house, which we bought as a ‘renovator’s delight’ 13 years ago. It was a liveable house with beautiful bones, but it was tired and cold, and hadn’t been given the love it needed.”

The original plan was to update and extend the house after 12 months. “It just took us a lot longer to get our act together,” says Alison. They finally approached architect George Fortey of NTF Architecture in 2016.

With that part sorted, Alison and Nick - who share the home with their daughters Lucy, 12, and Sophie, 10, and six-year-old son Jack - also briefed interior designer Terri Shannon of Bloom Interior Design. “We immediately felt that Terri shared our vision for what we were after,” says Alison. “We asked her to guide us with everything from the finishes and fixtures to the furniture and artwork.”

For Terri, the early 1900s home - one of many turn-of-the-century houses in a lovely tree-lined street - was ripe for a complete makeover. A classic yet contemporary renewal that would glow with warmth and serenity.

“The home was definitely in need of an overhaul for its growing family,” says Terri. “The palette was outdated, and so were the kitchen and the bathroom areas. But I always thought the house had huge

potential to become a beautiful family home, with spaces that felt warm and friendly.”

The project, undertaken by Mil Constructions, took about 12 months to complete. The sitting room - known as the retreat - and the main bedroom suite at the front of the house were retained in place, while what was once the family bathroom and a second bedroom were converted into a butler’s pantry and the laundry. In the airy extension at the rear, the open-plan kitchen/dining/living domain links directly to the lushly landscaped garden. The new upper level houses the children’s bedrooms and the family bathroom.

For Terri, it was important that the house maintain the character of its past, while looking to a bright future. “The style of the home touches on the classic elements in the Victorian wing,” she says. “But we’ve introduced a modern approach to these spaces.” And the result is simply ▶

“WE BOUGHT THE HOUSE AS A ‘RENOVATOR’S DELIGHT’. WE ALWAYS LOVED IT, BUT IT HADN’T BEEN GIVEN THE LOVE IT NEEDED.” *Alison, owner*



**KITCHEN** *This page and opposite top* Splashback in Inax ‘Madoka’ tiles, Artedomus. White joinery finished in Dulux Lexicon Half; timber joinery in Even Romano veneer from Elton Group. Super White dolomite benchtops, Apex Stone. Brodware ‘City Stik’ tapware, Bentons. Gubi ‘Ronde’ pendant lights, Cult Design. Hendrix stools, Jordan. The custom pantry door features fluted glass from Axxess Glass. **BUTLER’S PANTRY** *Opposite bottom* Muuto ‘The Dots’ wall hooks, Surrounding. Settler leather seat pad, Wortley Group. Door handles, In-Teria. Caesarstone Frozen Terra benchtop. Inax ‘Hemings’ wall tiles, Artedomus. KitchenAid ‘Artisan’ stand mixer. Artwork by Emma Lipscombe.



THE PALETTE

Dulux Love Pat (retreat)	Dulux Basic Coral (main bedroom)	Dulux Sage Monica (pantry)
-----------------------------	--	----------------------------------



Paint colours are reproduced as accurately as printing processes allow.

glorious: what was once a dark, poky house has been opened up to reveal a light and alluring haven for an active family.

Employing a timeless base palette of natural materials - notably oak, terrazzo and stone - the home is also a compelling example of the considered use of colour. Recurring accents of blush, teal and sage come into play to provide harmony within the walls, plus imbue each of the spaces with personality and drama.

Arguably the most transformative use of colour, however, is in the original rooms overlooking the leafy streetscape. Alison and Nick's bedroom, a romantic vision in Dulux Basic Coral, offers a cocooning sanctuary. Across the hall, meanwhile, the retreat - painted moody Dulux Love Pat - is an elegant space for the adults to relax.

Terri was thrilled that Alison and Nick were prepared to take the plunge, colour-wise. "It's always wonderful when homeowners are fully on board with using colour," she says. Adds Alison: "Terri took us out of our comfort zone - the very safe and conservative option - and gave us the confidence to use colour and texture throughout the house."

The result is a home that leaves an indelible impression on all who visit. And one that proves slow and steady can reap the greatest reward in a family's forever-home story. "I still pinch myself when I walk through the house," says a thrilled Alison. "I couldn't be more grateful to everyone who worked on it."

NTF Architecture, Cremorne, Victoria; (03) 9429 3200 or ntfarchitecture.com.au. Bloom Interior Design, South Melbourne, Victoria; (03) 9397 4343 or bloominteriordesign.com.au. Mil Constructions, Port Melbourne, Victoria; www.milconstructions.com.au.



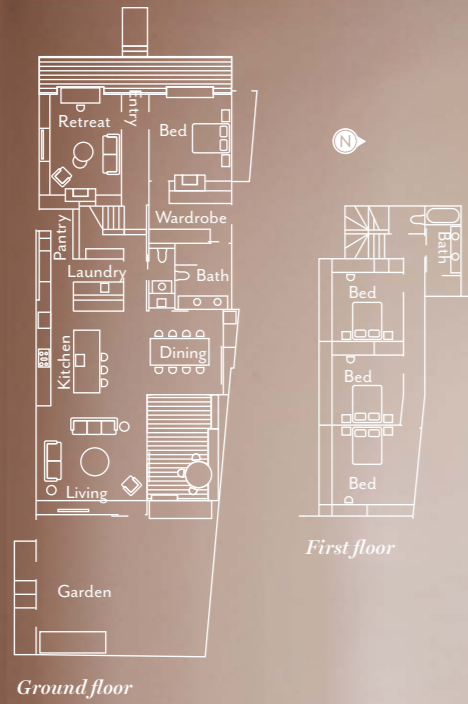
"TERRI TOOK US OUT OF OUR COMFORT ZONE - THE VERY SAFE AND CONSERVATIVE OPTION - AND GAVE US THE CONFIDENCE TO USE COLOUR AND TEXTURE THROUGHOUT THE HOUSE." Alison



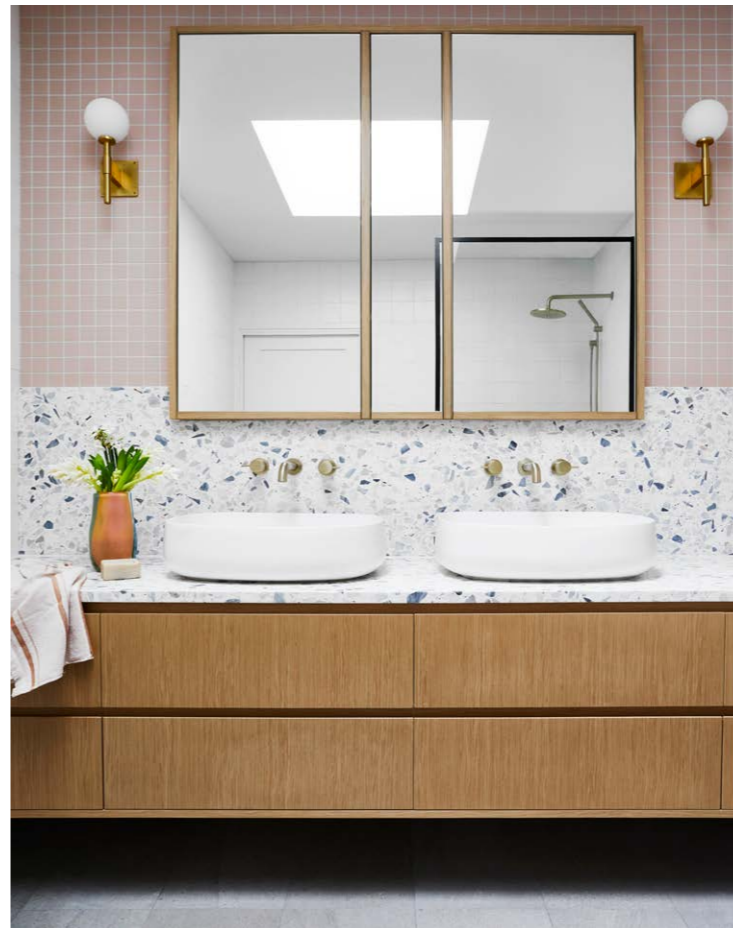
**RETREAT** Above and opposite Artwork by Min Woo Bang. Andy sofa, Kelly armchair, Hector floor lamp, Joy ottoman and Arthur side table, all Jordan. Bella wall mirror, Warranbrooke. Il Fanale 'Molecola' suspension light, LightCo. Cabinet handles, In-Teria. Agra rug, Armadillo. **FIRST-FLOOR POWDER ROOM** Left Inax 'Herning' mosaic tiles, Artedomus. Caesarstone Frozen Terra shelf. Custom-made mirror by Antic Cabinet Makers. Caroma 'Sunstone' basin, Reece. Brodware 'City Plus' tapware and towel holder, Bentons Finer Bathrooms. Mini Dome wall light, Allied Maker. **FAMILY BATHROOM** Far left Custom timber vanity with Caesarstone Frozen Terra benchtop. Brodware 'City Stik' tapware, Bentons. Laufen 'Ino' basins, Reece. Mini Dome wall lights, Allied Maker. Inax 'Herning' mosaic tiles, Artedomus. Super Matt White wall tiles, Earp Bros. Polka Dot Grey floor tiles, Teranova.



THE LAYOUT



**WALK-IN WARDROBE** *Above left* Blackbutt door pulls, In-Teria. Curtain in Hemptec 'Venito', Bloom Bespoke. Carpet, Don Currie Carpets. **MAIN BEDROOM** *Above right and opposite* Turenne Dynamic chandelier, Bloomingdales Lighting. Dome sconces, Allied Maker. Bedside table, Zuster. Bedlinen, Bedouin Societe. Nook bed, Jordan. Bedhead upholstered in Venice velvet and bench seat cushion in James Malone Fabrics 'Bundoran', both from The Textile Company. Artworks by Antoinette Ferwerda. Adele mirror, Warranbrooke. **MAIN ENSUITE** *Below, left and right* Inax 'Plain 50' feature wall tiles, Artedomus. Terrazzo splashback, benchtop and ledge, and Limestone Oyster floor/wall tiles, all Signorino. Super Matt White wall tiles, Earp Bros. Brodware 'City Stik' tapware and shower set, 'City Plus' hand shower and Parisi 'Seed 550' basins, all Bentons Finer Bathrooms. Bastion sconces, Allied Maker. ▶



## H&G HOUSES

**GARDEN** Sophie, Jack and Frankie. Petersen Tegl 'D91' bricks, Robertson's Building Products. Outdoor dining setting, Jordan. The Artusi barbecue is set into a custom benchtop designed by NTF Architecture and built by Antic Cabinet Makers.

### THIS IS THE LIFE

Now comfortably settled into their freshly renovated home, Alison and Nick particularly appreciate that the house has become an inviting destination for guests too. With multiple living areas, each member of the family can spend time with their friends without imposing on anyone else. "We all really enjoy having people over," says Alison. "It's such an easy house to entertain in, with lovely spots for everyone to get together."



## THE SOURCE

*Whether used as an accent or in whole swathes, colour is just the thing to bring life and dynamism to a space...*



Produced by Saffron Sylvester.

1 Bjorn Arch wall mirror, \$374, Life Interiors. 2 Leeroy armchair, \$4167, Jordan. 3 Comporta Bliss book by Carlos Souza, \$170, Palmer & Penn. 4 Tillary wall light, \$235, Coco Republic. 5 Architect Collection engineered-timber flooring in White Smoked, from \$85/m<sup>2</sup>, Royal Oak Floors. 6 Omni ottoman, \$929, Living Styles. 7 Contemporary Curved Arm floor lamp, \$369, Lighting Collective. 8 Issho dining table, \$4990, King. 9 Vice Versa carafe, \$149, Fazeek. 10 Waratah roller blind fabric in Pluto, from \$364, Luxaflex Window Fashions. 11 Fibonacci Stone 'Rocketman' terrazzo tile, POA, Di Lorenzo Tiles. 12 Contour bedside table, \$4600, Zuster. 13 Scala handshower with wall bracket in Living Tumbled Brass, \$550, Reece. 14 Alex stacking side tables, \$2755/set of 3, Living Edge. *For Where to Buy, see page 196.* H&G