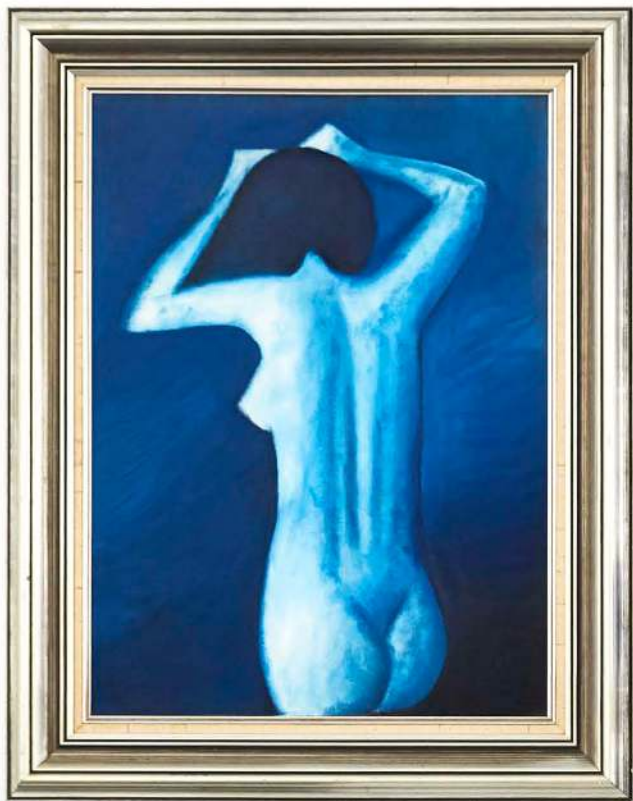


DESIGN FILE

KITCHENS | BATHROOMS | EXPERT ADVICE | RENOVATE | CREATE



ARTWORK (UNTITLED) BY ROBERT DICKERSON
STYLING AISHA CHAUDHRY PHOTOGRAPHY ARMELLE HABIB

mix old and new

“The contemporary furniture makes this room a more modern space, but it’s still elegant with our custom-made wool sofa,” says Terri, of the divine sitting room that celebrates the curve. (King Living’s ‘King Boulevard’ 3-seater sofa is similarly curvaceous.) A Kelly Wearstler ‘Linden’ lamp sits on a classic table in the corner, blending the traditional with a modern style. The home’s exterior (opposite) celebrates the original era of the home with a classic yet chic palette.



ARTWORKS (LEFT), SILVER WINDOWS BY NICHOLAS TRUSCOTT (RIGHT) STYLED BY ROBERT DICKERSON

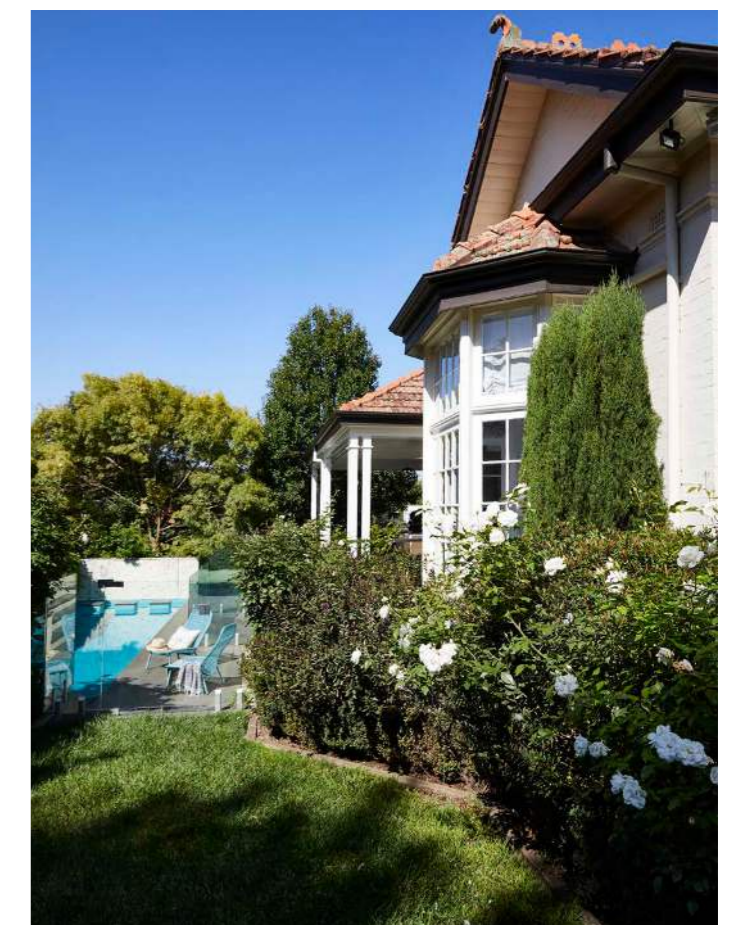
DESIGNER MASTERCLASS:
HIDDEN GEM

THE BEAUTY OF A HERITAGE HOME IS BROUGHT BACK TO LIFE WITH A PARED-BACK APPROACH

Words **KATE BARBER** Styling **AISHA CHAUDHRY**

Photography **ARMELLE HABIB**

WHEN INTERIOR DESIGNER Terri Shannon from Bloom Interior Design first walked into this grand four-bedroom Edwardian home in a leafy suburb of east Melbourne, she could see that the interior, dated from the '80s and '90s, was overdue for an update. “The walls were very cream, the floorboards were a Baltic pine brown colour and the window furnishings were outdated,” says Terri. Yet, the home’s bones were strong and many original features – including a large bay window in the sitting room, fireplaces in a number of rooms and stunning pressed metal ceilings – still remained intact. The homeowners, a busy couple with two teenagers, wanted a crisp look so their stunning collection of artworks could stand out, and to emphasise the home’s original features. This was achieved by taking a minimalist approach with colour, furniture, lighting and rugs. “We went softly with all the furnishings so that all the architectural elements spoke,” explains Terri. “I think it’s really helped bring all those features out by paring back everything... Everything pops now because of that contrast of the really dark flooring and the really vivid white walls.” Leaving the artwork to take centre stage. >



TURN UP THE LIGHTS

"We used feature lighting throughout, as that's what leads your eye up to the ceiling," says interior designer Terri. "The light fittings in the sitting room (below) and formal dining room (opposite, top right) from Space Furniture look like shards of mother-of-pearl shell. It's quite beautiful."



paint it white

"When you have a room with such beautiful decorative features, paint it a fresh white, such as Dulux Vivid White," advises Terri, who used the selection here. "The whole room popped and came alive." Vivid White also forms the perfect backdrop for the artworks, including this one by John Perceval, with blues that mirror the custom velvet chairs.



TAKE A SOFT APPROACH

The Edwardian home has many beautiful original elements, such as fireplaces (above & opposite) and a large bay window in the sitting room (above left). "Everything is very subtle in this space, with soft textures like wool, velvet and linen," says Terri. She has used clever techniques to keep the features as the real heroes, such as replacing the existing curtains on the bay window with a soft Roman blind in a sheer linen fabric from Mokum. "I didn't want to take away from that beautiful window," says Terri. She has also painted the doors throughout in Dulux Black to make them more of a standout feature.

"EVERYTHING IS VERY SUBTLE IN THIS SPACE, WITH soft textures LIKE WOOL, VELVET AND LINEN"

~ TERRI SHANNON, INTERIOR DESIGNER

STAY GROUNDED

"A big component of what we did was pick rugs for every room," says Terri. A custom-made Armadillo & Co charcoal textured rug (above & left) grounds the space under the French dining set in the formal dining room, taking a supporting role rather than as a star attraction, while the elegant sitting room rug (opposite) draws the eye. "It's a rug from Halcyon Lake with soft pastels through it," she says. The rug in the informal dining area (see page 98) contrasts the floor, which was sanded back and stained in Feast Watson Japan Black. "We wanted to break up the heavy, dark flooring and lighten it up," says Terri. >

ARTWORKS (THIS PAGE) 'SHARK BAY SERIES III' BY TOM HEGEN (OPPOSITE PAGE) 'FISHING AT WILLIAMSTOWN' BY JOHN PERCEVAL



CELEBRATE STATEMENT ARTWORK

Throughout the home, the white walls act as a foil for the owners' striking artwork collection, and this is particularly prominent in the informal dining area, where a large piece by Arthur Boyd titled *Big Chook* dominates the wall above the dining table from Zuster and leather chairs from Jordan. "That artwork is quite a statement piece in that area so we didn't want to take away too much from it," explains Terri. "We kept the furniture quite subtle."

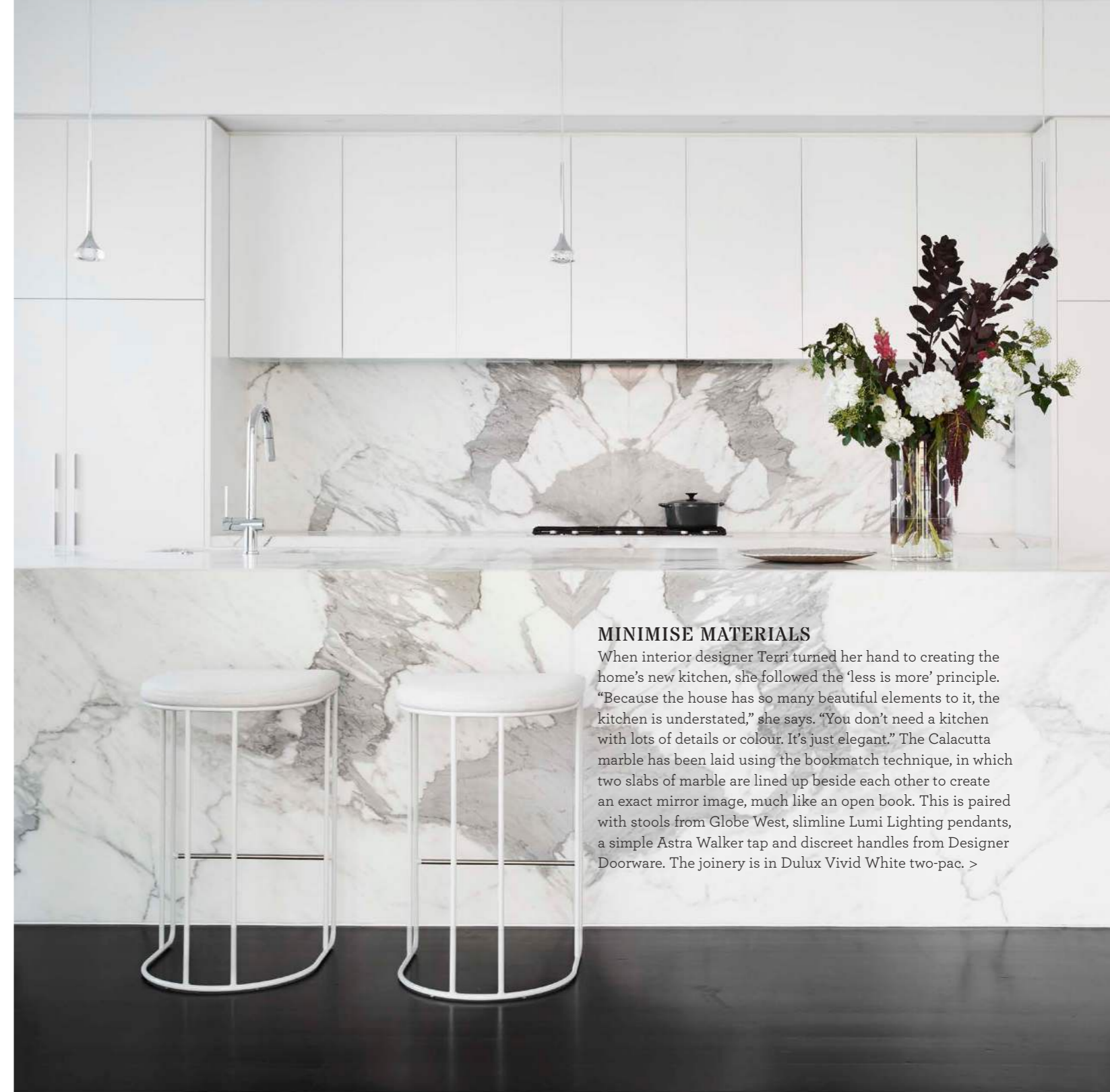
connect the dots

The repetition of materials and tones creates a pleasing visual effect. "In the informal dining room, the dark timber table ties to the floor," says Terri. The marble in the kitchen (opposite) is also seen in the custom joinery of the informal living areas.



"YOU DON'T NEED A KITCHEN WITH LOTS OF *details* OR COLOUR"

~ TERRI SHANNON, INTERIOR DESIGNER



MINIMISE MATERIALS

When interior designer Terri turned her hand to creating the home's new kitchen, she followed the 'less is more' principle. "Because the house has so many beautiful elements to it, the kitchen is understated," she says. "You don't need a kitchen with lots of details or colour. It's just elegant." The Calacutta marble has been laid using the bookmatch technique, in which two slabs of marble are lined up beside each other to create an exact mirror image, much like an open book. This is paired with stools from Globe West, slimline Lumi Lighting pendants, a simple Astra Walker tap and discreet handles from Designer Doorware. The joinery is in Dulux Vivid White two-pac. >



CONSIDER PATTERNS

The homeowner wanted to add more texture to the main bedroom (above & left), which was achieved by adding patterned curtains. "We found this 'Shalimar' fabric at Mokum and thought it was really beautiful for the window furnishings," says interior designer Terri. "This room is quite big, so using a pattern gets that layering in there." For the homeowner, it proved an instant love: "We showed it to her and she said, 'Yes!'" says Terri. The pattern also echoes beautifully with the *Night Daisy 1* artwork by Kimmy Hogan.

"IT'S NOT OFTEN YOU GET A CLIENT WHO IS *happy* TO USE PATTERN FOR WINDOW FURNISHINGS"

~ TERRI SHANNON, INTERIOR DESIGNER

WARM UP LARGE SPACES

The main bedroom brings in colour for added texture and layering. "The caramel- and chocolate-coloured bed linen (left) from Bedouin Societe helped to pull in a little bit more warmth into the space and gave the bedroom a really layered, soft approach," explains Terri. "It also made it a bit more modern for what's on trend now in interiors for winter." This is paired with a cushion and blanket sourced from Linen & Moore. The bedhead was upholstered by Bloom Interior Design in a soft blue linen, while handsome Zuster bedside tables and a mirror from Warranbrooke were chosen for their elegance. A classic round pendant light is complemented by more angular marble lamps from Bloomingdales Lighting.



KEEP IT SIMPLE

The homeowners were after a contemporary and stylish look for the main bedroom's ensuite bathroom (above & opposite, top left). "I wanted a seamless approach to the bathroom where the limestone speaks for itself," says Terri. Pietra Natuca limestone from Signorino is used on the walls, floors and vanity, which has moulding from Porta on the front. "That gave a profile to the joinery, which has a scalloped effect," says Terri. Another standout feature was handmade Japanese tiles from Artedomus beside the bath (opposite, top left) that proved to be a statement in the space. The other elements almost fade into the background. Lighting from Hub Furniture and simple tapware from Astra Walker offer up an understated supporting role.

Interior designer: Terri Shannon, Bloom Interior Design, bloominteriordesign.com.au 