

# changing rooms

A FINISHED, POLISHED LOOK DOESN'T STOP TERRI AND LUKE CONSTANTLY EVOLVING THEIR MELBOURNE COTTAGE

STORY ANNA McCOOE STYLING WENDY BANNISTER  
PHOTOGRAPHY ARMELLE HABIB



**SECOND CHANCE** Dedicated renovators Terri and Luke (opposite, with their eldest daughter, Charlie, and Honey, the cavoodle) had the past on their minds when they tackled their once-unloved cottage in inner Melbourne. Today, painted in Dulux Natural White, it's a picture of heritage perfection – but the facade has come a long way from the charmless exterior it once was. In a stroke of luck, Terri and Luke uncovered the original period block cladding when they started removing a layer of fake plastic weatherboards. “We wanted to restore it to its original glory,” says Terri. The couple replaced unsympathetic metal posts with turned wood and added arched fretwork, while Luke built the front timber deck from recycled timber from an old Victorian home. >



The feeling of coming home to a sanctuary of pulled-together style is lost on Terri and Luke's daughters, Charlie, nine, and Chloe, seven, who don't quite understand the significance of it just yet. Their charming Edwardian cottage in Melbourne's inner west suburbs is just 'home'.

But for their mum, the eyes of the project, and dad, the skilled hands, home is a testing lab for their continuous stream of ideas. "I see new things I love every day," explains Terri, an interior designer. "I'm always trying new looks at home. It means I can actually give good advice."

As the creative spirit behind Bloom Interior Design & Decoration and the captivating Bloom & Co store in Williamstown, design gets under Terri's skin like an itch. Her workdays are spent surrounded by paint chips, material samples and a shop full of props to play with. "Now that I have my own store, it's quite a worry," she says. "The kids get sick of their mum always changing things, but it's a bit of fun!"

Renovating and decorating is a passion shared with Luke. Inspiration often strikes Terri during moments of off-duty calm and, reveals her husband, it manifests as a look in her eye. "There's no fighting it," says Luke, who operates another family business, Think Shutters. "Once Terri gets that feeling, things move pretty quickly!"

This double-fronted 1912 house is the seventh home the couple have renovated together. When they bought it in 2011, the high ceilings were falling down and there was a patchwork of vinyl over the Baltic pine floor. "It was pretty unlivable, but the opportunity to do our own thing was a huge drawcard," recalls Terri.

Luke spent six months stripping each room to its frame, salvaging the original cornices and fireplaces. New lighting was installed, and Terri designed custom joinery and marble surfaces for the kitchen and bathroom. The pair stayed true to the traditional Edwardian six-room layout, but the third bedroom became an office and the main bedroom was carved up to include a black-and-white ensuite. >



**LIVING ROOM** Natural wool sisal carpet from Godfrey Hirst puts a fresh spin on things here. Terri and Luke celebrated the home's Edwardian architecture by keeping the original cornices and an elegant bay window, with Plantation shutters by Luke's company, Think Shutters. Terri's furniture is high on squish factor. The sofas were reupholstered by Cavalier in Westbury Textiles linen (for similar, try 'Cherbourg' linen in Navy) and the armchair and ottoman came from Bloom & Co, while the potboard coffee table is from Perfect Pieces. The table lamp has travelled with the family through seven renovations, and the stunning 'JK0520' iron chandeliers from One World seen throughout Terri's home provide instant glamour. For a uniquely framed mirror such as this one, try Shine Mirrors.



**PAINT**  
Eggshell Acrylic in Elegance, \$97/4L, Porter's Paints.

"MY HOME IS LIKE A *test run* FOR MY CLIENTS. IDEAS ARE *constantly* RUNNING THROUGH MY MIND" ~ TERRI



**ENTRY & HALLWAY**

A glossy front door in Dulux Black (top) opens to an L-shaped hallway, which features Glenda McDougall's delicate artwork *Printemps De Jour* and La Maison 'Marseille' pendants. The master touch is the custom hall seat and Armadillo & Co hall runner, both from Bloom & Co - they turn the hallway from a transitional space into a lovely destination. When the family moved in they stained the original Baltic pine floorboards black, but after living here for a couple of years Terri sanded them back and they were limewashed by Luke. "The black looked stunning, but with two children and a dog, the floor drove me mad with wear and tear!" she says.



**LIVING ROOM**

Terri didn't hold back on the living room overhaul (above, left & opposite). She discovered the old fireplace under a layer of boards and had it acid-dipped and enamelled in black. The timber mantels were re-coated white, while a Calacatta marble hearth was installed to bring the age-old feature in line with the couple's taste. Anastasia Wiltshire's *Meetings #2* adorns the wall.





**PAINT**  
Wash & Wear  
Barrier Technology  
in Natural White,  
\$74.95/4L, Dulux.

**DINING ROOM** This room exhibits the high ceilings and restored fireplace of a formal Edwardian space, while Thonet dining chairs and an Armadillo & Co 'Serengeti' rug, both available from Bloom & Co, add understated charm. The extendible timber table is a family relic. "I love that it's a bit rustic so the kids can do anything to it and that adds to the texture," says Terri. For a modern version, try Brosa's 'Elizabeth' extendible table. Above the stool is *Cameo X* by Hilary Herrmann, a favourite artwork. Terri also designed and painted, in Dulux's Natural White, a joinery either side of the chimney, so it can transition into a wardrobe at a later date. The cake stand is from Bloom & Co. "I just keep bringing cake stands home," she says. "It's a bit of an issue of mine. At some stage I'm going to have to host a high tea!" The ginger jar is a treasure she has had for years, while try Temple & Webster for a similar piece of round wall art.



< The result showcases Terri's signature style, which is best described as a fresh take on classic with a spoonful of playful features to thrill the eye. Her penchant for black, white, grey and blue flows through each space, steeping the house with a polished feel. But finished? Never! "The walls have been three different colours, and we've only been living here three years," she says with a laugh.

This renovating couple is already planning their next big assignment – demolishing the rear lean-to addition that is currently the laundry, turning the dining room into a third bedroom, so their daughters can have their own spaces, and adding an open-plan kitchen/dining/living room, with the existing kitchen becoming the new laundry. They also intend to add a courtyard, pool and garage.

These are major renovations, but even on the smallest scale, nothing will gather dust at this address for too long. Right now, Terri – whose cupboards are filled with ceramics and all manner of interesting objects that she regularly rotates – is all about inky indigo, but she does feel a soft green-grey moment coming on. "A lot of the design work is fairly temporary, but I have to have nice things around me," she says.

Her renovating and decorating itch may never go away but, as she adds with a smile, "It does make life interesting."

**KITCHEN**

With an extension out the back part of the master plan, the kitchen was never going to be permanent – but as a big part in the lives of this family, it needed to be a happy space. "I did spend money on it, even though it's temporary," says Terri, who plans to re-use the marble benchtops and Shaker-profile 2-pac joinery

as a butler's pantry in the next phase of the reno. Subway tiles from De Fazio Tiles & Stone add to the home's classic look. "They were perfect," says Terri, who completed the modern-traditional vibe with Schots Home Emporium handles, an Ikea sink and appliances from Smeg. And the finishing touch, an Original BTC 'Titan' pendant light, which was found at Dunlin.



**"YOU HAVE TO *move on* FROM TRENDS. WHAT I LOVED THREE YEARS AGO, I DON'T *necessarily love* NOW" ~ TERRI**



**DINING ROOM**

A buffet from Perfect Pieces (left) is filled with blue-and-white ceramics from Made In Japan – "I've always loved blue," says Terri – and an ever-changing collection of treasures. Claire Stening's *Ink* artwork overlooks the console (above). "I love the stillness of it and the strength of the colour," says Terri.

**LAUNDRY**

The hallway leads to an added-on weatherboard-clad room at the rear of the house, which has been converted into a short-term laundry. Baltic pine flooring was laid over an unfinished concrete floor and the walls were reclad in new weatherboard. A playful Armadillo & Co 'Dandelion' rug softens a very practical zone. >





“ALL THE WINDOWS ARE *original*. WE LOVE THAT SOME *features* HAVE ALWAYS BEEN HERE” ~ *TERRI*

**FLOORING**  
‘Moorish Night’  
handmade encaustic  
floor tiles in  
White, \$165/sqm,  
Jatana Interiors.

**WE LOVE...**  
*cute kids' shelves*

Storage is crucial in Charlie and Chloe's shared room, so the hutch and dresser combination between the beds from Parenthood is as practical as it is pretty. Made of rubberwood and engineered wood, they provide room for display and storage. The pieces are sold separately – hutch, \$699/1150mm x 1010mm, dresser, \$999/900mm x 1010mm; [parenthoodfurniture.com.au](http://parenthoodfurniture.com.au). >

**WALLPAPER**  
Osborne & Little  
‘Birdcage Walk’ wallpaper  
by Nina Campbell in O3,  
\$238/10m roll, Seneca.



**MAIN BEDROOM**

An interior designer, Terri believes curtains should be six centimetres longer than the hanging height, to perfectly kiss the floor – and lives up to her word in the main bedroom (top left). These curtains are from furnishings business Bloom Bespoke, another company that she runs with Luke, while the bed is dressed in linen from Bloom & Co. The artwork behind the bed (left) is *Girl 1* by Anastasia Wiltshire.

**ENSUITE**

“I am never sick of my bathroom,” says Terri, who adores the Jatana floor tiles (left). De Fazio wall tiles, Astra Walker tapware, Schots Home Emporium handles and a custom vanity combine new with old. She also likes the marked Calacatta marble vanity top and hand-picked the slabs from Apex Stone. “The marks add character, but it’s not for everyone,” she admits.

**FAMILY BATHROOM**

“I wanted a flow, for all the spaces to connect – black and white is timeless and works absolutely everywhere,” explains Terri of her decision to replicate the decor of the ensuite in the main bathroom (top right). A Reece bath and Emac & Lawton pendant add to the appeal, while the artwork is another Anastasia Wiltshire piece, *Portrait Boy*.





“I TRY TO IDENTIFY THE *most-loved* POSSESSIONS AND WORK THEM INTO A *seamless* DESIGN PLAN” ~ TERRI



**OFFICE** This was once the office for Terri's business, which moved off-site when it grew to a team of six. Now, it is used by her daughters as a homework hub (opposite, top). Terri's signature panelled joinery encloses filing cabinets, while a slab of marble forms an L-shaped desk that sits beneath a treasured artwork, Du Chonggang's *Wrap Up No.2*. La Maison dining chairs are covered in Unique Fabrics felt (for similar, try Westminster 'Oscar' felt in Marl), and a round replica Saarinen 'Tulip' table from Matt Blatt continues the use of marble.

## SOURCE BOOK

### INSIDE STORY TERRI & LUKE'S HOME

#### Who lives here?

Terri, an interior designer and retailer; her husband, Luke, a window furnishings manufacturer; their daughters, Charlie, nine, and Chloe, seven (pictured left); and Honey the cavoodle.

#### Why did you choose this house?

Terri: "When we first saw it, we were so excited. At the open inspections, people were walking in and straight out, but we loved that it was untouched. We wanted to put our stamp on it."

#### What was your best budget-saver?

"I am lucky to have a husband who is very handy! We also managed to re-use costly items, including the doors, windows and floorboards."

#### What was your best buy?

"My chandeliers. We found them at the right price and knew they would do the job."



ACTUAL PAINT COLOURS MAY VARY ON APPLICATION. ILLUSTRATION KENZIEDESIGN.COM

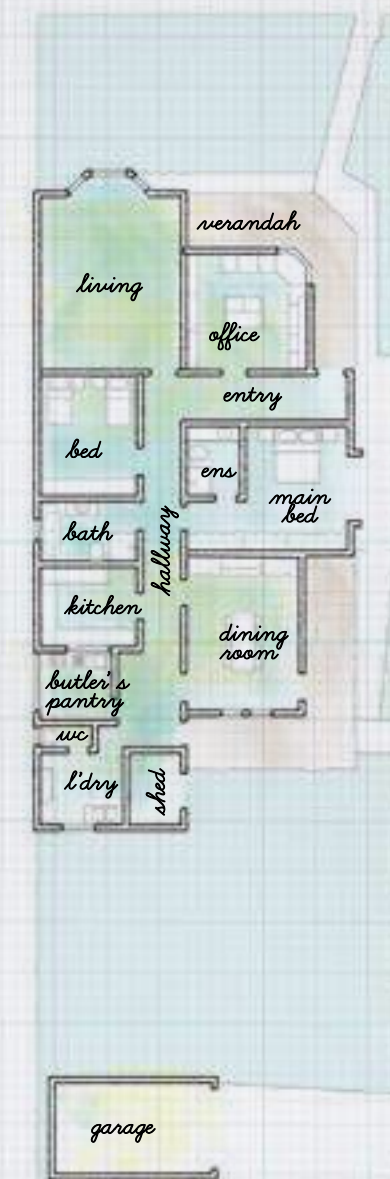
#### GARDEN

In the beautifully groomed front garden, rows of English box, rosemary and Portuguese laurel give the area a tailored structure. Terri loves how her old urn has

rusted over the years (for similar, try Parterre). Just to the left of the shady verandah, large bluestone pavers are embedded in gravel and mark out a pathway to the front gate.

## PLANS

### GROUND FLOOR



## CONTACTS

#### Interior designer

Bloom Interior Design & Decoration, (03) 9397 4343, bloominteriordesign.com.au.

#### Window furnishings

Think Shutters, (03) 9397 4343, thinkshutters.com.au.

#### Shop

Bloom & Co, (03) 9397 0022, bloomandco.com.au.