

## H&G HOUSES

**EXTERIOR** The new entrance creates a more welcoming and stylish sense of arrival. The exterior is painted Dulux Stone River with trim in Dulux Natural White. 'Brady' wall lanterns, Custom Lighting. Buxus and cloud trees, Conifer Gardens Nursery. Garden designed by Noni Young Garden Design and Helen Melville of Evolving Gardens.

# RURAL RETREAT

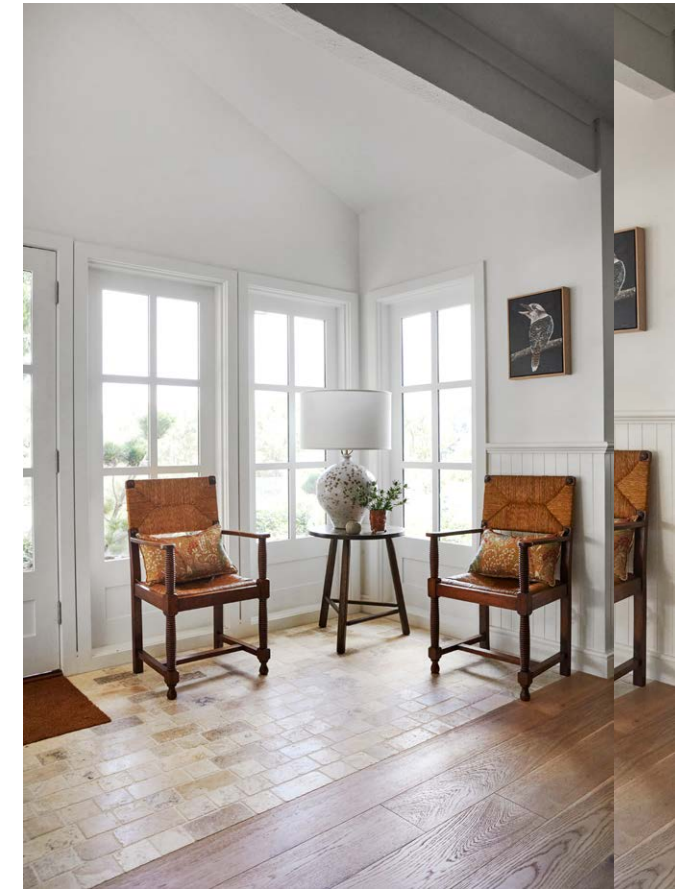
A Colonial-look 1970s property on the Mornington Peninsula in Victoria is gently renovated with an English-country aesthetic in mind.

STORY *Judy Pascoe* | STYLING *Heather Nette King* | PHOTOGRAPHY *Armelle Habib*



## THIS IS THE LIFE

Margaret and David are delighted with their revamped weekender and the ease of entertaining visiting family and friends. But they say, “there is still lots to do in the future”. Plans for the property include expanding the garden and renovating the old cottage located in an outer paddock. For David, a keen golfer, a dream project is to add a putting green.



Victoria’s Mornington Peninsula is a popular playground for locals and visitors, offering a wealth of activities from surfing and golfing to winery tours and fine dining. Couple Margaret and David had owned land in the area for some years, intending to build a weekender there but when they came across this established circa 1973 house on a large block their plans changed.

The appeal of the single-storey, Colonial-style property was undeniable with its pool, tennis court and separate cottage. Views over nearby vineyards and easy access to great restaurants, shops and golf courses were an added bonus, as well as the proximity to Merricks Trail, a walking or riding track that meanders through an attractive bush reserve linking to wineries and eateries at either end.

Margaret and David and their Corgi, Bertie, spent nine years in the house before deciding to renovate. As Margaret works

for Melbourne interior design practice Bloom, she naturally turned to director Terri Shannon and senior interior designer Nina Rowlands for their expertise, and designer Belinda Tuck who assisted with fabric and furniture selections.

“The house was a bit cold and draughty, and Margaret and David wanted it to feel warmer and more colourful as well as relaxing,” says Terri. “The brief also included a new front entrance and an improved view from the living areas that necessitated the removal of a large supporting structure in the dining room. They also wanted to add a pitched roof, which would continue over the rebuilt deck to create an outdoor ‘room,’” adds Nina.

The notoriously wet winter climate in the area made the removal and construction of a new roof rather tricky, but once that was achieved and the structural work was completed attention turned to decorating. “Margaret and David favoured an English country aesthetic,” says Terri, and the colours used throughout reflect their love of green, taupe and pink. ▶

**KITCHEN** Walls painted Dulux Natural White. Custom two-pac joinery by Bloom Interior Design painted Dulux Fossil Grey made by Werribee Joinery and Cabinet Works. Perrin & Rowe tapware in polished chrome, and butler’s sink, The English Tapware Company. Splashback in Carrara marble subway tiles, Byzantine Design. Zimbabwe Black granite benchtop, G-Lux. Neff appliances, E&S Trading. Astier de Villatte plates, Lily Pond. Rug, Najaf Rugs. Chippendale ottoman, Wills Bisgrove, upholstered in Schumacher ‘Nevado’ in Desert, Grant Dorman. **STUDY** Walls painted Dulux Deep Walnut. The owner Margaret with Bertie the dog. Rug, Najaf Rugs. Bees by Richard Stringer, Fletcher Arts. **ENTRY** Chairs, Miguel Meirelles Antiques, upholstered in Elliott Clarke Mulberry ‘Fantasia’ fabric. Cricket table, Greg Stirling Furniture. Aerin ‘Gaiois’ lamp in Pharaoh White, Bloomingdales Lighting. Artwork by Sophie MacKinnon, Red Hill House. Mod Collection Travertine Reale floor tiles, Byzantine Design.



**KITCHEN** Joinery by Bloom Interior Design painted Dulux Fossil Grey made by Werribee Joinery and Cabinet Works. Perrin & Rowe tapware, and butler's sink, The English Tapware Company. Splashback in Carrara marble subway tiles, Byzantine Design. Zimbabwe Black granite benchtop, G-Lux. Neff appliances, E&S Trading. Bentwood bar stools, Thonet, with custom seat pads in Elliott Clarke 'Rocco' fabric in Light Tan. Coffee machine, Rancilio. Cake stand, French Country Collections. Rug, Najaf Rugs. **DINING** Vintage table from one of the original Manly ferries. Custom seat pads in Elliott Clarke 'Vallan' fabric in Sage. Custom cushions in Fabricut 'Gordaldo' in Flax, The Textile Company. 'Ajmer' rug in Sangria, Hali. Winnie chandelier, Custom Lighting. Vintage bar cart, Diane Bergeron. Artwork by Claire Stening. *Billecart-Salmon* print by Billie Justice Thomson, Modern Times.







**LIVING** Sofa upholstered in Elliott Clarke Alhambra 'Jacob 06' fabric. Throw, Hermès. Custom ottomans by Bloom Interior Design made by Wills Bisgrove in Mokum 'Eternal' in Linen, James Dunlop Textiles, with fringing by Inge Holst, Elliott Clarke. Custom coffee table, Chatsworth Fine Furniture. Chobi rug, Silk Road. 'Corso' sideboard, Canvas+Sasson. Custom chair in Elliott Clarke Lewis & Wood 'Deer Park' fabric, Bloom Interior Design. Cushion and lamp, Bloom Interior Design Archive Collection. Stool, Asian Tide. Artwork by Patricia Wood, Philips Auctions. Custom curtains in James Dunlop Textiles Mokum 'Eternal' fabric, Bloom Interior Design. **DINING** 'Winnie' chandelier, Custom Lighting. Artwork by Claire Stening. Tray, cups, jug and pot, Bloom Interior Design Archive Collection.



“They wanted the home to feel warmer, more colourful, as well as relaxing, and they favoured an English country aesthetic.”

TERRI SHANNON, INTERIOR DESIGNER





The expanded entrance with its new travertine flooring leads in to the generously sized open-plan living and dining area, which has been refreshed with new picture windows to provide spectacular district views as well as allowing an abundance of light into the home. Three bedrooms, three bathrooms, a study, kitchen and laundry round out the floorplan.

In keeping with the desire to create a feeling of warmth in the home, older pieces and those with an interesting provenance were incorporated into the furniture scheme. This includes a dining table that was salvaged from an original Manly ferry, and some of the couple's existing chairs and a sofa that were reupholstered to fit in with the updated aesthetic. Margaret's fondness for stripes and patterns is evident throughout in cushions, rugs and upholstered benches.

While a fresh neutral - Dulux Natural White - was chosen for most of the interior, a deep charcoal shade for the V-groove panelling and joinery in the study and taupe for the kitchen and laundry joinery promote a sense of warmth. "The dark shade in the study really makes the new picture window pop, highlighting the beautiful aspect and greenery outside," says Nina.

In the main bedroom there are allusions to country style in the Lewis & Wood wallpaper that features a delicate trailing leaf pattern in green, and the rustic aesthetic is further enhanced by the checkerboard tumbled tiles on all the bathroom floors.

The rebuilt deck with its soaring roof is the perfect spot for alfresco lunches on sunny days when guests can enjoy the tranquillity of the country lifestyle. Margaret and David couldn't be happier. "We love the warmth and comfort that everyone can enjoy. Bloom understood our brief completely and made our vision come to life. We can't wait to spend more time here when we retire." ►

**Bloom:** [bloominteriordesign.com.au](http://bloominteriordesign.com.au).

**Luke Shannon:** [info@lukebuilt.au](mailto:info@lukebuilt.au).

**Noni Young Garden Design:** [noniyoung.com.au](http://noniyoung.com.au)

**Evolving Gardens:** [evolvinggardens.com](http://evolvinggardens.com).

**OUTDOOR DINING** Vintage table, Jeff's Shed (now closed). Verdun chairs, Early Settler, with cushions in fabric by Lucy Montgomery. Tablecloth, Heirloom Tableware. Addison Ross placemats, Rose Street Trading Co. Plates, bowls and napkins, Casa e Cucina. Cutlery, Hutch Table Accessories. 'Gluggle' jug, The Essential Ingredient. Glassware, Country Road. Outdoor pots, Bunnings. **ENTRY** Artwork by Debbie Mackenzie, Red Hill House. Chippendale ottoman, Wills Bisgrove, upholstered in Grant Dorman Schumacher 'Nevado' fabric. Rug, Najaf Rugs. Mod Collection Travertine Reale floor tiles, Byzantine Design.





**HALLWAY** Artworks by Susannah Bond. Cushion in Suzanne Tucker Home 'Amara', Tigger Hall Design. Bedside table, Abode Living. **BATHROOM** *Opposite, top left, bottom right* Joinery and mirrors, Werribee Joinery and Cabinet Works. Carrara marble benchtop, G-Lux. Wall tiles, Byzantine Design. Floor tiles, Surface Gallery. Bath, Reece. Aerin wall light, Bloomingdales Lighting. **BEDROOM** *Top right, bottom left* Lewis & Wood 'Beech' wallpaper in Document Green, Elliott Clarke. Bedcover in Schumacher fabric, Grant Dorman. Bedside table and lamp, Bloomingdales Lighting. Chair, Chatsworth Fine Furniture. Joinery by Werribee Joinery and Cabinet Works with fabric insets in Tigger Hall Design Nile & York 'Track' fabric.

THE PALETTE

Dulux Stone River  
(exterior render)

Dulux Deep Walnut  
(study walls and joinery)

Dulux Fossil Grey  
(kitchen joinery)



Paint colours are reproduced as accurately as printing processes allow.



**STUDY** Chairs, Freedom, with custom cushions in James Dunlop Textiles Casamance 'Matsu Lin' fabric. Table, Greg Stirling Furniture. Kelly Wearstler table lamp, Bloomingdales Lighting. Vase, French Country Collections. Artwork by Erin Chaplin, Otomys. Rug, The Rug Collection. French oak flooring, Woodcut.



1

## THE SOURCE

*Bring warm country style to your interiors with classic and vintage-look pieces in timbers, woven textures and prints.*



Produced by Andrea Healy.

1 'Jasminum' plate, \$176, John Derian. 2 Sabre Paris bamboo salad set, \$110, Emporean. 3 'Maurice' glass cabinet in Drifted Matt Black, \$3895, Coco Republic. 4 'Taylor Sky' cushion, \$47, Domayne. 5 Thomas O'Brien 'Piaf Grande' chandelier, \$2290, The Montauk Lighting Co. 6 'Crafted' table lamp, \$369, Few & Far. 7 'Avalon' throw blanket in Écru/Camel \$2755, Hermès. 8 'Mississippi' outdoor dining chair, \$799, Domayne. 9 'Bayview' rattan tray in Brown, \$84.95, French Knot. 10 'Barndo' reclaimed dining table, \$1099, Early Settler. **H&G**