

# FRENCH FANCY

A streamlined layout and timeless palette lift this Victorian terrace to new heights and make it a relaxing haven for its family

STORY STEPHANIE HOPE | STYLING HEATHER NETTE KING | PHOTOGRAPHY ARMELLE HABIB

ARTWORK (OPPOSITE) 'BANKSIA'S' BY SARAH HASSETT, FORMAN  
ART & FRAMING ALL PAINT COLOURS MAY VARY ON APPLICATION



Refined tastes Kelly and Mark's home, where they live with daughter Emily, is a study in grace that honours its heritage. In the sitting room (this page), an existing sofa and armchairs were recovered in Mokum 'Vintage Deux' in Blush (sofa), Sky (armchair on right), and Colefax and Fowler 'Wilde' animal print in Old Blue (armchair on left). The ottoman has Manuel Canovas 'Momas' fabric from Domus Textiles and a Brunschwig & Fils 'Le Coeur Passementerie' trim from Elliott Clarke that echo the intricately detailed facade (opposite). >



## INSIDE STORY *Kelly & Mark's home*

**Who lives here?** Kelly and Mark, both in financial services, their daughter Emily, 10, and Lulu the six-year-old Miniature Schnauzer.

**What's your design style?** Kelly: "French, stylish, luxurious and a little minimalist – no clutter."

**Any renovation challenges?** "With our home built in the 1880s we had some interesting angles and measurements along the way."

**Most used space?** "The kitchen and butler's pantry provide all we need – situated in the middle of the home, it provides easy access to the paved terrace for outdoor entertaining and the dining room for more formal dinners."



*The transformation of this* Victorian terrace in Melbourne was 25 years in the making, starting when married couple Kelly and Mark purchased the home in 2001 with plans to renovate and flip. However, they ended up staying. They undertook a second renovation in 2023. As parents to 10-year-old daughter Emily and fur-parents to Lulu the Miniature Schnauzer, the couple were keen to rejig the layout to bring in more natural light and allow for separate living zones as well as a study for when they work from home.

While Kelly and Mark had numerous home renovations and redecorations under their belts, they decided to outsource this one. Enter Terri Shannon and Nina Rowlands of interior design studio Bloom, who got the ball rolling on the redesigned floor plan and new interiors scheme. The rear of the house was opened up for a spacious kitchen, a new butler's pantry and breakfast banquette. For the formal living room and dining room, Terri and Nina selected a palette of soft blues, greys, whites and a touch of pink. Upstairs, the couple's bedroom was treated to a blue scheme and custom wardrobes.

With all of these beautiful indoor spaces, the couple realised the courtyard needed its own revamp. In answer, the team at Landart designed a paved terrace with a built-in bench seating and landscaped gardens. The sunny space works well for entertaining, but the moments they cherish are the ones when it's just the three of them. "We love the instant sense of warmth and belonging we feel each time we come through the front door," says Kelly. "We can't really believe it's our home." **■** *For more stunning homes, visit [www.homebeautiful.com.au](http://www.homebeautiful.com.au).*

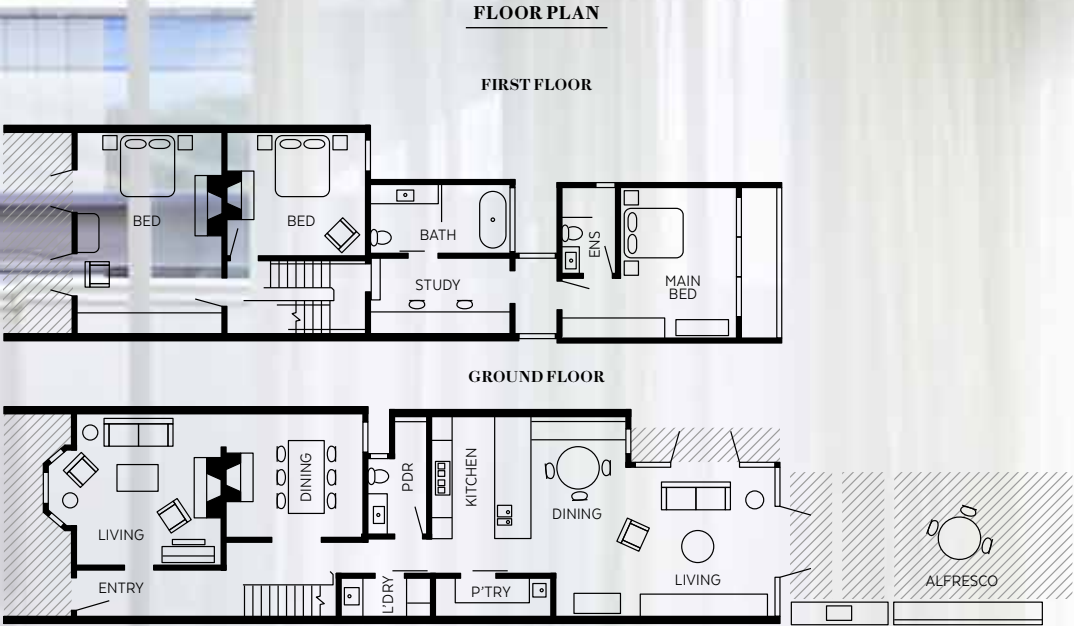
**Dining** A bench seat (this page) is a spot for casual meals for Kelly, Mark and Emily (pictured with pet dog Lulu). The couple's existing chairs were reupholstered and paired with a custom table from Chatsworth Fine Furniture. **Formal dining** In the dining room (opposite), a hand-painted mural by Sally Fisher fills the walls. Dining chairs were recovered in Jane Churchill 'Shelley' fabric from Domus Textiles. >

ARTWORKS (THIS PAGE) 'WINTER CAPS' BY MIO DRAG JANKOVIC  
(OPPOSITE) 'GIRL WITH ROSY CHEEKS' BY MARILYNNE BARNES



Living A Molmic ‘Lille’ sofa in the living area (this page) has Mokum ‘Sahel’ upholstery in Denim from James Dunlop Textiles, while the ‘Stanley’ armchair from Arthur G is covered in a dark blue Alhambra fabric from Elliott Clarke. Tying it all together is an Armadillo ‘Agra’ rug in Pearl, which is topped with an ‘Amphora’ brushed gold table from Boyd Blue and white side table from Cromwell. Sheer curtains in James Dunlop Textiles ‘Lino’ fabric filter the light beautifully through the sliding doors. >

WE LOVE...  
*white steel doors*  
To highlight the living room's fresh and airy scheme, Terri and Nina designed white steel-framed doors to blend in with the white walls and ceilings. For similar, try Zen Doors & Windows or Metro Steel Windows. See zendoors.com.au or metrosteelwindows.com.au.







ARTWORK (THIS PAGE, TOP RIGHT) BY MARIKA BORLASE FROM FORMAN ART & FRAMING (OPPOSITE) 'GIRL WITH A LIGHT' BY CHARLES BLACKMAN

**Kitchen** Kelly loves cooking at the beautiful island made from Bianco Carrara honed marble from Signorino, which is fitted with a Miele dishwasher (top right), as well as a Schock 'Quadro' sink from Abey and a Brodware 'Manhattan' mixer. 'Katie Globe' pendants from Bloomingdales Lighting are above (opposite). The two-pac joinery is in Dulux Lyttelton Quarter. "The drinks cabinet (top left) is a winner for Mark, who enjoys mixing up a cocktail or two when we entertain," says Kelly. Fluted glass doors from Axess Glass and the Viridian mirrored glass splashback give it a luxe treatment. **Butler's pantry** Sliding fluted glass doors (bottom right) keep any mess in the butler's pantry out of sight. It features the same joinery, benchtops and tapware as the kitchen, with a single Schock 'Quadro' sink (bottom left). >





*Emily's bedroom* A Wills Bisgrove 'Thomas' bedhead in Mokum 'Infinite' fabric in Blush and artworks, including 'On My Way' by Carla Coulson (above bedside table, opposite), lend a youthful edge. A bone inlay dresser from Ruby Star Traders, chair by Bloom in a crisp white linen fabric and 'Jasmine' table lamp from Bloomingdales Lighting are other special touches. >





“TERRI AND NINA SELECTED  
LIGHT, ELEGANT MATERIALS  
THAT PERFECTLY REFLECTED  
OUR MOOD” KELLY



***Emily’s ensuite** Emily’s bathroom (top left) features ‘Dust’ zellige wall tiles from Tiles of Ezra, an ornate ‘Alberto’ wall sconce from Bloomingdales Lighting and a round-edged mirror from Timberline. **Bathroom** Tumbled Carrara tops the vanity and lines the walls and floors of the main bathroom (top right, bottom right & opposite), while the upper walls feature ‘Snow’ zellige tiles from Tiles of Ezra. ‘Lloyd’ large jewelled sconces flank the custom mirror by Ore Designs. A Turner Hastings ‘Cambridge’ freestanding bath from The Blue Space takes centre stage below the window. Tapware and fixtures by Brodware. **Powder room** In this space (bottom left), Teranova ‘Juliette’ tumbled octagon floor tiles in Carrara and Nero Marquina add refined elegance to the shower area. >*





#### SOURCE BOOK

*Architect* Daniel Kontista,  
Kontista & Co, [kontista.com.au](http://kontista.com.au).  
*Builder* Adam Carter, Tenet  
Construction, 0422 624 905.  
*Interior design* Bloom,  
[bloominteriordesign.com.au](http://bloominteriordesign.com.au).  
*Landscape design* Landart,  
[landart.com.au](http://landart.com.au).

**Balcony** Emily swings on an Aura Home hanging chair on her balcony (this page), which is lined with Tiento tiles. “She has the best view to wake up and fall asleep to,” says Kelly. **Courtyard** The paved outdoor space (opposite) designed by Landart features a Classic With a Twist outdoor setting and a striking pergola that ties in with the rear extension.

